

# Rubber surfacing kit instructions

Your kit contains enough EPDM pellets and Binder to create a soft uniform durable rubber surface on your equipment.

Before starting make sure you have all of the equipment

That you will need to complete the task.

Your kit includes EPDM rubber, Nitrile Gloves, Binder(glue) and a trowel

We also recommend having plastic vapor barrier sheeting or tarps, safety glasses, paper towels, plastic container for sprinkling, masking tape and felt marker and ruler sized wood edger, and a piece of wood to use as a tamper or kitchen roller on hand.

**It is best to work in a well-ventilated area or outdoors**

**Your kit was designed to provide enough EPDM UV resistant rubber and binder to complete your obstacle and provide a long-lasting comfortable running surface with superior grip**

**Drying times can take from one to 3 days depending on humidity and temperature.**

## **IMPORTANT WARNING**

**Do not get Binder(glue) on your skin or clothing**

**If you do immediately wash it off with soap and water**

***Before starting look over the sprinkle method pictorial enclosed***

# Dog Walk Kit

It is important to ensure that your surface is stripped, clean, dry and free of oil or chemicals  
Before starting the project.

It is recommended to place a tarp on the ground and cover a table or work bench with vapor  
barrier then lay your board (S) on the table or workbench.

**We recommend starting with your contact zones first**

**Your kit provides adequate yellow rubber for either 36 or 42" contact zones**

**Place your tape at the 36 or 42" mark depending on your preference and cover the side edges  
of the ramp board to protect them from glue.**

**Pour a small quantity of binder onto the surface and using your trowel spread a light coating  
of binder over the contact zone. *Make certain that the entire surface of the zone is covered*  
Wipe your trowel free of glue.**

**Once the zone is covered with binder(glue) sprinkle yellow pellets over the contact area  
using a small plastic container as a shaker (do not overfill-refill as needed)**

**Starting at the end of the board and working inward to the inner edge of the contact zone.**

**Use your trowel to move any excess pellets back and forth in the zone to ensure coverage.**

**Next using a piece of wood as a tamper or a kitchen roller press the pellets down into the glue.**

**Add more pellets to areas that are inadequately covered**

**Once you are satisfied remove tape from the edges and repeat these steps to create the  
Yellow contact zone on the other ramp.**

**Once this is completed you can start on the bridge**

**Tape the sides of the bridge and then start applying Binder and add Blue colored pellets**

**Using the same method as adding the yellow pellets.**

**You may want to cover 4 or 6 feet of the board at a time depending on humidity and how  
quickly the binder is curing.**

**Do not forget to remove the masking tape after the job is completed.**

**Allow the boards to dry for 24 hours before adding the blue rubber to the tops of the ramps**

**Use the same procedures to add binder and blue pellets to the ramps as was used for the bridge.**



## Competition walk kit

**Kit includes adequate product for 36" or 42" contacts**

- **\*\*Our kits follow AKC Contact Zone specifications\*\*** Material provided for the Yellow Contact Zone area is for the AKC Specification of 42" in length on each end of the obstacle. Blue granules cover the remaining surface area on your Dog Walk Planks ( 3-12ft long planks)
- Treat your dog to better traction with this soft and attractive rubber surface application kit without significantly increasing the weight of your obstacle. You'll achieve a comfortable, rubberized surface with our high quality materials, using our proven application method.
- Our kit has enough Granules and Glue/Binder that you will need to resurface your new or used equipment. The Pampered Paws kit will include glue, rubber granules, spreader, and application directions. The end result is a beautifully soft, uniform rubber surface that is bonded to your obstacle top. Our kits are NOT designed for the wet pour method.
- The Handlers Choice kit for the Competition Dog Walk includes blue granules, yellow granules, and glue/binder, enough to cover a total of 36 sq ft. **\*\*OBSTACLE NOT INCLUDED\*\***
- Some Suggested misc items you may need are: gloves, tarp, safety glasses, paper towels, and masking tape. **\*\*These items are NOT included\*\*** Please note, it is still recommended that you cover your obstacle or bringing it inside during periods of inactivity or inclement weather.

\* **Wet Pour Kits are also available from Handlers Choice**

# TEETER TOTTER KIT

**It is important to ensure that your surface is stripped, clean, dry and free of oil or chemicals  
Before starting the project.**

**It is recommended to place a tarp on the ground and cover a table or work bench with vapour  
barrier then lay your teeter board on the table or workbench.**

**We recommend starting with your contact zones first**

**Your kit provides adequate yellow rubber for either 36 or 42” contact zones**

**Place your tape at the 36 or 42” mark depending on your preference and cover the side edges of  
the teeter board to protect them from glue.**

**Pour a small quantity of binder onto the surface and using your trowel spread a light coating  
of binder over the contact zone. *Make certain that the entire surface of the zone is covered*  
Wipe your trowel free of glue.**

**Once the zone is covered with binder(glue) sprinkle yellow pellets over the contact area  
using a small plastic container as a shaker (do not overfill-refill as needed)**

**Starting at the end of the board and working inward to the inner edge of the contact zone.  
Use your trowel to move any excess pellets back and forth in the zone to ensure coverage.  
Next using a piece of wood as a tamper or a kitchen roller press the pellets down into the glue.**

**Add more pellets to areas that are inadequately covered**

**Once you are satisfied remove tape from the edges and repeat the steps to create the  
Yellow contact zone on the other end of the teeter board.**

**Allow the zones to dry for 24 hours before installing the blue pellets in the middle sections  
of the seesaw surface.**

## Competition See-Saw kit

**Kit includes adequate product for 36 or 42” contacts**

- **\*\*Our Handlers Choice kit follows the AKC Contact Zone specifications for a 12 ft Long Plank that is 12 in wide\*\* Material provided for the Yellow Contact Zone area is for the AKC Specification of 42 in length on each end of the obstacle. Blue granules are provided for the remaining 60inch center portion of the plank.\*\***
- **Treat your dog to better traction with this soft and attractive rubber surface application kit without significantly increasing the weight of your obstacle. You'll achieve a comfortable, rubberized surface with our high quality materials, using our proven application method.**
- **Our kit includes enough granules and glue/binder to resurface your new or used plank. The end result is a beautifully soft, uniform rubber surface that is bonded to your obstacle top. Our kits are not designed for the wet pour method.**
- **Our Handlers Choice kit for the Competition SeeSaw Teeter Plank includes blue granules, yellow granules, and glue/binder, enough to cover a total of 12 sq ft. Plank NOT included. Also included; a plastic spreader, and application directions for a 12 ft long, 1 ft wide, Plank.**
- **Some additional suggested misc items you may need are: gloves, tarp, safety glasses, paper towels, and masking tape. \*\*These items are NOT included\*\*Actual OBSTACLE NOT INCLUDED.**

\* **Wet Pour Kits are also available from Handlers Choice**



# WET POUR

## A FRAME KIT WITHOUT SLATS (SLATS KIT SOLD SEPERATELY)

**It is important to ensure that your surface is stripped, clean, dry and free of oil or chemicals  
Before starting the project.**

**It is recommended to place a tarp on the ground and cover a table or work bench with plastic  
vapor barrier then lay your board on the table or workbench.**

**We recommend starting with your contact zones first**

**Your kit provides adequate yellow rubber for the 42” contact zones**

**Place your tape at the 42” mark and cover the side edges of the board to protect them from glue.**

\* Pour the yellow EPDM pellets into the container.

• Add the equivalent of 3 to 3.3 oz of binder for each pound of pellets into the mix.

• Should

\* Stir with a utensil or with your gloved hands, making sure to break up any clumps of pellets.

• Continue mixing until the entire mixture is wet. You will notice that the color appears darker  
once mixed and ready.

• You can now slowly spread the mix evenly onto the surface, starting in the center and spreading  
the mix outward towards the edges.

• You will need an edger to keep the mix from falling off the surface as you approach the edges.

• We suggest a 5-in-one plastic tool or a small strip of plywood.

\* You want to coat the surface at about the thickness of the largest pieces of the EPDM pellets,  
making sure that there are no gaps

**Once the contact zone has been completed and dried enough to continue (we recommend  
waiting 24 hours but it will vary with temperature and humidity ) Pour a small quantity of binder  
onto the surface and using your trowel spread a light coating  
of binder over the designated blue zone.**

**Wipe your trowel free of glue. repeat the steps to create the  
Blue zones on both of the A Frame ramp boards..**

# WET POUR METHOD

**Please find below the instructions for mixing your EPDM pellets with binder:**

**\*\*Warning:\*\***

**\* Wear Nitrile gloves.**

**\* Use plastic spoons or utensils for mixing.**

**\* Use a plastic pail or bowl, depending on the quantity of the product.**

**After you have prepared the surface to be covered with rubber:**

\* Pour the EPDM pellets into the container.

\* Add the equivalent of 3 to 3.3 oz of binder for each pound of pellets into the mix.

\* Stir with a utensil or with your gloved hands, making sure to break up any clumps of pellets.

- Continue mixing until the entire mixture is wet. You will notice that the color appears darker once mixed and ready.

- You can now slowly spread the mix evenly onto the surface, starting in the center and spreading the mix outward towards the edges.

- You will need an edger to keep the mix from falling off the surface as you approach the edges.

- We suggest a 5-in-one plastic tool or a small strip of plywood.

- \* You want to coat the surface at about the thickness of the largest pieces of the EPDM pellets, making sure that there are no gaps

# A FRAME KIT WITHOUT SLATS (SLATS KIT SOLD SEPERATELY)

It is important to ensure that your surface is stripped, clean, dry and free of oil or chemicals  
Before starting the project.

It is recommended to place a tarp on the ground and cover a table or work bench with plastic  
vapor barrier then lay your board on the table or workbench.

We recommend starting with your contact zones first

Your kit provides adequate yellow rubber for the 42" contact zones

Place your tape at the 42" mark and cover the side edges of the board to protect them from glue.

Pour a small quantity of binder onto the surface and using your trowel spread a light coating  
of binder over the contact zone. *Make certain that the entire surface of the zone is covered*

Wipe your trowel free of glue.

Once the zone is covered with binder(glue) sprinkle yellow pellets over the contact area  
using a small plastic container as a shaker (do not overfill-refill as needed)

Starting at the end of the board and working inward to the inner edge of the contact zone.

Use your trowel to move any excess pellets back and forth in the zone to ensure coverage.

Next using a piece of wood as a tamper or a kitchen roller press the pellets down into the glue.

Add more pellets to areas that are inadequately covered

Once you are satisfied remove tape from the edges and repeat the steps to create the  
Yellow contact zone on the other ramp board.

Allow the zones to dry for 24 hours+ before installing the blue pellets on the top sections  
of the A frame ramps.

## DOG WALK KIT (WITHOUT SLATS )

Slat kits available separately



Wet pour kits also available from Handlers Choice

# PAUSE TABLE KIT

It is important to ensure that your surface is stripped, clean, dry and free of oil or chemicals  
Before starting the project.

It is recommended to place a tarp on the ground and cover a table or work bench with vapour  
barrier then lay your teeter board on the table or workbench

Your kit provides adequate yellow rubber for a 3FT X 3FT Pause Table surface.

Place tape at the side edges of the Pause Table to protect them from glue.

Pour a small quantity of binder onto the surface and using your trowel spread a light coating  
of binder over the contact zone. *Make certain that the entire surface of the zone is covered*

Wipe your trowel free of glue.

Once the table is covered with binder(glue) sprinkle yellow pellets over the contact area  
using a small plastic container as a shaker (do not overfill-refill as needed)

Start at the outside edge of the Table and work inward to the other side

Use your trowel to move any excess pellets back and forth in the zone to ensure coverage.

Next using a piece of wood as a tamper or a kitchen roller press the pellets down into the glue.

Add more pellets to areas that are inadequately covered

Once you are satisfied remove tape from the edges

Allow to dry for 24+ hours .



## PAUSE TABLE RUBBER SURFACE KIT FOR 3' X 3' TABLE

- Treat your dog to better traction with this soft and attractive rubber surface application kit without significantly increasing the weight of your obstacle. You'll achieve a comfortable, rubberized surface with our high quality materials, using our proven application method.
- Our kit contains the granules and glue/binder that you need to resurface your new or used equipment. The Pampered Paws kit will include glue, rubber granules, spreader, and application directions. The end result is a beautifully soft, uniform rubber surface that is bonded to your obstacle top. Please note; Our kits are NOT designed for the wet pour method.
- The Pampered Paws kit for the Pause Table includes yellow granules

# ADD ON SLATS KIT

It is important to ensure that your surface is clean, dry and free of oil or chemicals  
Before starting the project.

It is recommended to place a tarp on the ground and cover a table or work bench **OF AT LEAST THREE FEET WIDE** with plastic vapor barrier sheeting

Using 1 x 2" 3/4" thick furring strip boards, coat the sides of the boards that will be exposed to the rubber mixture with Vaseline or mineral oil and clamp the boards to the table

Allow 1"-1.5" apart as the channel to be filled with your rubber mixture.

Your kit provides adequate rubber and binder for 10 units of Blue and 6 units of yellow 1.5" wide x 3/4" high x 36" long slats adequate for one A frame or cut into one foot sections for Dogwalks.

Always check your Kennel club regulations for clarification on contact zone and slat placement requirements.

*Wearing gloves and eye protection Using a plastic mixing bowl or bucket mix in 1 to 2 pounds of pellets and pour in 6 to 7 oz of Binder and stir thoroughly until you notice the rubber has a darker consistent appearance.*

*Then using a trowel or putty knife scoop the mixture into your pre lubricated forms making sure To put downward pressure on the rubber until you are certain that the mixture is compressed then smooth out the top of the slats*

Once you are satisfied remove forms

Allow to dry for 24+ hours

Once the slats are set you can lift peel them off the vapor barrier plastic sheeting

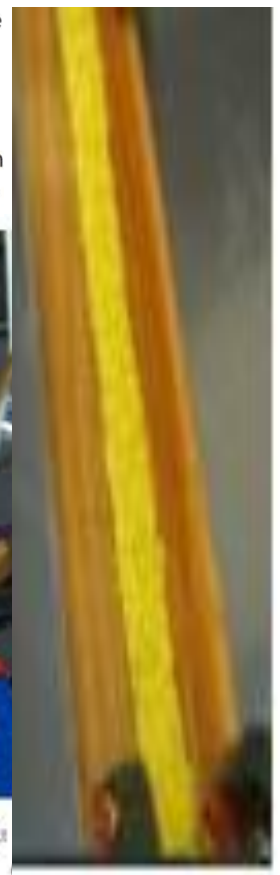
## Rubber slats kit



Slats can be placed on the surface of a rubberized contact, but the most durable way to approach slats is to form the slats on the surface to start. →



Shown above forms are being designed To form slats on the ramps



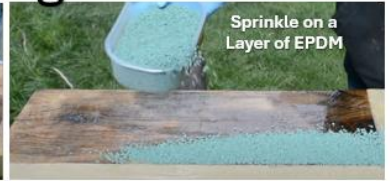
# Sprinkle method resurfacing



Remove old surface  
And sand down



Pour and spread  
Thin layer of Binder



Sprinkle on a  
Layer of EPDM



smooth out EPDM and  
Ensure adequate fullness



Press down EPDM with  
Flat surface or roller



Remove division  
Tape



Pour and spread  
Thin layer of Binder



Sprinkle on a  
Layer of EPDM



Press down EPDM with  
Flat surface or roller



Remove tape

Pamper your pet's paws with these easy  
To apply resurfacing kits which include  
EPDM pellets, Binder, Gloves and trowel

# Wet Pour Method



Surface area to be rubberized needs to be clean and free of  
grime or chemicals. Use ammonia based cleaner and paper  
towels.

Once dry a very thin layer of binder is applied to the surface  
spread with a trowel. Weigh granules and binder the ratio is  
Key -about 3.3oz per pound of granules



Spread granules on the primed surface  
With a clean towel  
(forms are clamped to contain granules)



Shown above adding mixture to dog walk  
(note forms are clamped on the sides)



Ramps have contact zones  
Here the transition is made to yellow  
(note forms must be removed promptly)



Close up of transition to the new color



Shown above forms are being designed

**To form slats on the ramps**  
Important: The binder used  
in this process is moisture  
cured. If you are in a humid  
environment, the binder will  
cure more quickly and if  
your environment is very dry  
spray the surface with water.



Shown above forms are being designed  
To form slats on the ramps

Slats can be placed on the  
surface of a rubberized  
contact, but the most  
durable way to approach  
slats is to form the slats on  
the surface to start. →

Always remove forms before  
the rubber mixture is set  
and cured! It will be very  
difficult to remove forms  
once the mixture is cured.  
Just about impossible.



Finished results



Finished results

Pamper your pet's paws with these easy  
To apply resurfacing kits from **Handlers Choice**  
which include  
EPDM pellets, Binder, Gloves and trowel

# Here are some videos

## We recommend watching on you tube

DIY Dog Agility Rubber Contact Target Mats and Travel Plank

YouTube · Margaret Hughes · May 13, 2020

Using wet pour method to create skins and cover equipment boards etc.



Tools needed + Nitrile gloves recommended ... Make sure there is plenty of ventilation ... cover work area with plastic vapor barrier sheeting (which rubber can be removed from once it has cured)



Measure amount of rubber needed and mix in about 3.3oz of glue per pound or  
A ratio of 1 kilo of glue to 5 kilos of rubber pellets (1Kilo of glue=33.8oz- 5 kilo =11lb)  
At approximately ¼” thick it takes about 1.1lbs of EPDM to cover 1 square foot.

In this video

- 00:10 Wet pour suggested temperature  
Minimum 40 degrees Fahrenheit but...
- 00:15 Clean the area, tape out dimensions  
and lay visqueen over your layout
- 00:19 Mix Binder and rubb at a 1:5 ratio
- 00:37 Clean tools with acetone
- 00:41 Allow at least 24 hours to dry or more,  
depending on weather.

## Other recommended resources

<https://www.youtube.com/watch?v=a8272cdMTVA>

<https://www.youtube.com/watch?v=GvY2K8HCEv4>

<https://www.youtube.com/watch?v=wHN5pqr2yRg>